

THE TIMOTHIAN

NEWSLETTER for ST. TIMOTHY EVANGELICAL
LUTHERAN CHURCH of GRAND ISLAND

1453 Staley Road, Grand Island, NY 14072

Our Pastor: Kris Bjerke-Ulliman

Our website: www.sttimothygrandisland.com

Our email: sttimothygrandisland@gmail.com

Our phone number: 716-773-4400

Our fax number: 716-773-4413

Our Vision:

*Christ Being the Cornerstone of
Grand Island*

Our Mission:

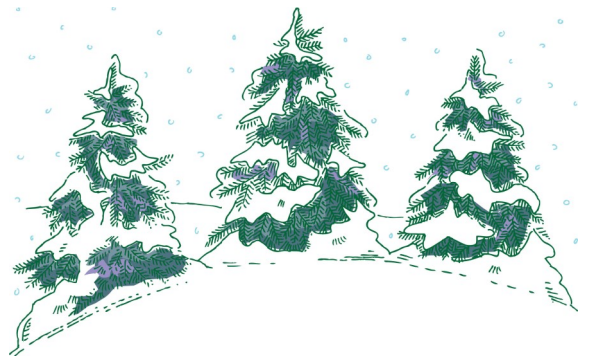
Sending Forth Disciples of Christ



January, 2020

Great things are happening at St. Timothy's! Here's what's inside:

- ◇ From the Pastor's Study: Achieving 20/20 Vision
- ◇ Why a Capital Campaign
- ◇ Guaranteed Ways to Miss the Hidden God
- ◇ Altar Guild Notes
- ◇ A Note from the President
- ◇ News and Updates from the Child Care Center
- ◇ December Thank-Yous
- ◇ Christmas Memories and December Fellowship
- ◇ Upcoming Fellowship
- ◇ Looking Ahead, Educational Gatherings, and Support Groups
- ◇ Prayer Chain and Pastoral Care
- ◇ Calendar and Service Chart



From the Pastor's Study: Achieving 20/20 Vision at St. Timothy



At St. Timothy we believe God has entered our world. The ONE, who was in the beginning with God, Jesus (God saves) became flesh and blood and lives among us. His name is "Em-manuel," which means "God is with us."

How do people know that God lives among us in 2020? Our sign at Stoney Point and Staley proclaims our activities. Are these simply reminders for ourselves or are they an invitation for the stranger to "come and see?" A sign can't reveal God's welcome and hospitality. A sign just points the way.

How do people know that God's hospitality and welcome lives among us in 2020? Just as the shepherds saw the sign and followed the Words of God's angels, the responsibility to welcome people into God's amazing life-giving kingdom rests on each one of us. The shepherds eagerly shared the good news of great joy with others.

We make Christ known by inviting others to worship with us at St. Timothy. When people worship they see that all are welcome to the Lord's table. We welcome friend and stranger, those with disabilities in body, mind, or spirit. All who believe Christ is present in the bread and wine are welcome. Holy Communion is a visible way to see that "God is with us."



Our blood does amazing things everyday! In every body, there are 60,000 miles of blood vessels linking 40 trillion cells. Blood is an amazing life-force within us, cleansing and nourishing every cell. When our blood is infected or unable to function as it has been created to, we suffer and die.

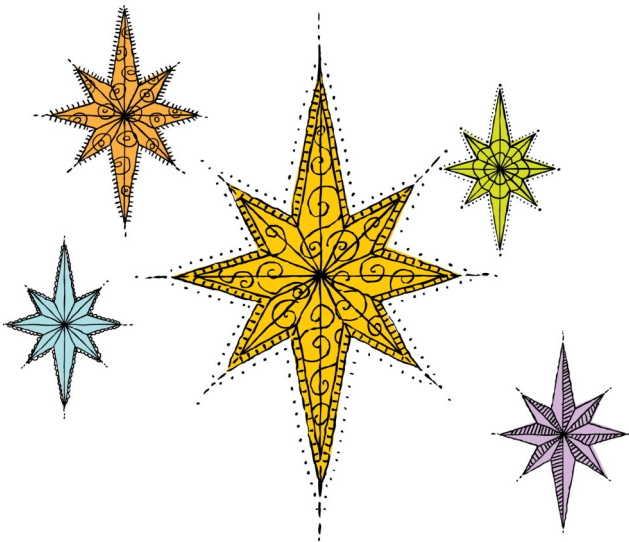
Jesus died for us and Christ's blood is shared with us – “given for you.” This is the greatest gift of hospitality every given into the world. Christ's blood gushes into our frail, battered, all-too-human minds and bodies with forgiveness, eternal life, and salvation. Feeding and nourishing each cell of our body, Christ connects our cells to God and our physical bodies are bound together in the love of God.



We need what God graciously gives through the body and blood of his Son. Without it, we are lost, forsaken and hopeless. Worshiping is a sign of the loving embrace God has on your life. Welcoming others to share in this embrace becomes a Divine sign of welcome and lifegiving hospitality.

Pastor Kris

Epiphany the Star (Spiritual activity)



A single star can both defy and define the darkness. A sky full of stars casts the most breathtaking glow lighting the way to everything that is real and lasting. Every prayer lights up the sky bringing a flood of God's compassionate and loving light into our lives. **Focusing on this light, you are invited to write your prayer requests on gold, yellow, and red tissue paper which will fill in a star throughout the Epiphany season.**

Our Prayers Are Heard

Why a Capital Campaign?

[The ideas listed are suggested conversation starters. This will be an agenda item at the Congregational Meeting on January 26th.]

1. We believe people recognize faith by how we use our resources to bring God's love to others.
2. Upgrades aren't done to make us look good, but to make God's presence within us be proclaimed without any interference or distractions and to enhance the spiritual experience.

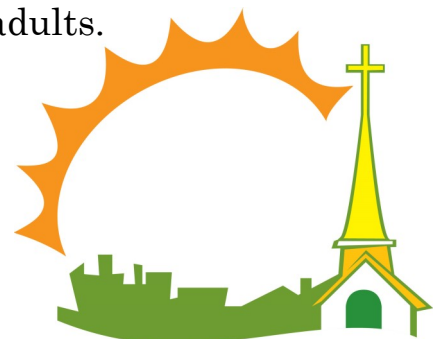


3. Septic System. A non-working infrastructure is a constant background distraction. A new septic system is a subtle but powerful sign of our faithfulness to God and God's Word through our Church and Child Care for years to come.

4. Worship Space. Our sacred environment needs to reflect our love of God by creating an exceptional sacred space designed to be welcoming, uplifting, and a sign of God's glory and grace in our lives.
5. Great Room. New durable tiles for our children's safety and years of play reflect our faith in our mission. This enhancement reveals we believe that God has called this church into being and will provide for all our needs. For our Child Care Center and Church, this is our only large meeting room which makes it a vital space for our community and congregation.

6. Siding and new windows for our Children Care Center continue the projects discussed in 2012-2015 when the new addition was completed. Everything breaks down in time, but we believe God's Word is our refuge which is why we choose to update and enhance our space for children and adults.

6. Our love of God, one another, and especially strangers, is revealed by the condition, attention, and care of our physical building environmental space. Our building is where God is made vitally visible.



Guaranteed Ways to Miss the Hidden God

- "1. LIVE your life at high speed. No exceptions. Run hard.
2. STAY scattered and distracted. The more clutter and activity, the better.
3. TAKE everything personally. Never evaluate. Agree.
4. USE blame liberally. It's so invigorating. I wasn't responsible, you were. Everything's your fault.
5. DON'T laugh, especially at yourself.
6. STAY tied to your past. Elevate it to greatness. Live remembering and longing. Or missing. Why do it halfway? Go for it.
7. USE the word 'because.' 'I can't change, because.' Because is so little appreciated as a solvent for responsibility. Try using because. This will work.
8. NEVER question or think for yourself. Just keep moving and accepting. (Refer to #1 and #3.)
9. CONTINUE to think of God as invisible and distant. Surely not present in this room. At this moment. Not while I'm reading a book.
10. REINFORCE the belief that your life is going to happen soon. This is not it, not yet. But one day. Maybe when I finish reading."

Sacred Threshold: Crossing the Inner Barrier to a Deeper Love by Paula D'Arcy

Altar Guild Notes: January, 2020

Enter January in a whirlwind. Decorated trees, greens, and poinsettias greet us. The Christ candle is lit. We are in the middle of the short 12-day season of Christmas.

In fact, January 1st is the Octave of Mary. It's been 8 days since the royal birth of our Savior and King. We pause for a moment to celebrate His human mother. The very real way God chose to bring the divine to us. It is not a fairy tale, not a story, not a myth; it can never be denied – it is the Gospel!



Epiphany marks the end of the Christmas cycle. Let's linger here for a moment. Three very human kings from three different directions follow the same star to find (and confirm for us) our Divine King. Look for the kings and that star on the pulpit frontal. This heavenly Child is born, not for a few, but as a light for the world!

Fast forward. The next Sunday finds us as celebrating the adult Jesus at His baptism. Christmas is put away.... The sanctuary still waits, still ready for you. The child is now a man bringing his light to the world during His Earthly ministry. We hear again how the Word of God is brought to the water of baptism. Jesus recognizes His humanity by John the Baptist with the earthly element of water. The world recognizes his divinity as God declares His beloved Son.



Two more Sundays. One more sanctuary change, lovingly referred to as the "short green season." Yes, you'll find the sanctuary dressed in green for next five Sundays. Jesus goes about the business of calling his disciples. The green color reminds us Christ is busy creating the church on earth.

That church is us. Go. Tell it on the mountain, in the valleys, on this island. Jesus Christ is our redeemer. Amen.

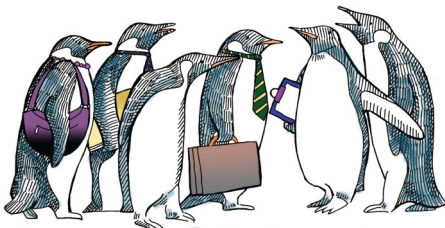
Your sister in Christ,
Deborah

A Note From the President

Happy New Year!

As I ponder about our church and child care center, St. Timothy's this past year, we have accomplished many things together. But is it enough? What is God calling us to do in 2020? What is God calling you to do this upcoming new decade?

How did you feel having our church full while our youth practiced and performed "How the Grinch found Christ in Christmas?" Or on Christmas Eve when our church pews and balcony were was bursting at the seams? It was an amazing feeling that I wish we could experience every Sunday! If you feel the same, reach out to those families that we don't see on a regular basis. Do God's work every day, learn empathy, practice forgiveness, and touch lives through your words and actions.



Annual Meeting

Please join us for our Congregational Meeting on January 26th. There will be one service at 10:30am and lunch will be provided, so please bring a salad or desert to pass. We will be discussing the audit report, our 2019 year in review, and our capital campaign.

In closing, I want to personally thank everyone who volunteers in big and small ways at our church and childcare center, and for those that don't, please join us. By each of us working together as God's team, there is nothing we cannot accomplish.

In peace,

Karen Rose



News and updates from the child care center

Thank you to all the parishioners and families who donated, worked and supported our annual Santa Breakfast! This year was a huge success! We couldn't have done it without the support we received!

It is hard to believe that 2020 is here. The Teachers have worked hard all year and we love the progress and milestones our children have accomplished so far!

We look forward to many more milestones!

Happy New year and many blessings for the upcoming year!

Joelle Waters

December Thank-Yous



The Grand Island Neighbor's Foundation received 209 pairs of socks from the Women of St. Timothy's Annual Christmas Party. Thanks to everyone who brought some in!

The Grand Island Community Chorus wants us to know that they truly appreciate St. Timothy's support throughout the years!

Thanks for your help with the hanging of the greens and decorating for Christmas! The Altar Guild is looking for a bit more help taking them down after the 10:30 service on December 5th.



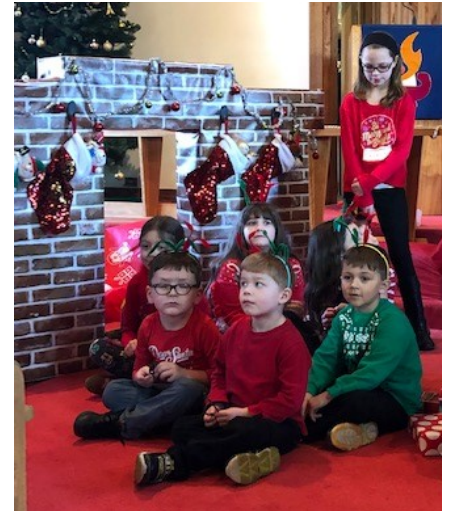
St. Timothy raised a total of \$843 for the cows! We got two for the price of one, so our congregation purchased two cows for families in need. We will discuss how to donate the extra \$343 at the congregational meeting. Thank you so much for your generosity and for being the hands and heart of Christ to those who may not know Him!

Many thanks to Barb Shepard for the years you've worked in our Nursery! We appreciate all you have done for the children and parents you've watched! Thanks also to Mary Ann Kemp for many months of decadent goodies. We appreciate your hard work! If anyone would like to pitch in with treats after the 10:30 service, let us know.



Christmas Memories and December Fellowship

The Child Care Center hosted a successful Breakfast with Santa, and those who attended the Advent Conspiracy found it useful. Our youth had a great time putting on the pageant How the Grinch found the Christ in Christmas, and the congregation enjoyed watching it!





We were also thrilled to have a full house for our Candlelight Service on Christmas Eve. As always, the Altar Guild did a beautiful job decorating the sanctuary for Christmas. Thank you for all your hard work!





Our Youth Group delivered the canned goods we collected in November to the Niagara Falls Community Missions in early December.

They spent the day volunteering in the soup kitchen doing food prep, serving, and cleaning, while interacting with the staff and the many people that depend on the generosity of the Community Missions and the donors in the surrounding areas.



Upcoming Fellowship



We'll be painting cute snowman totes for our January fellowship activity! Join us on January 22nd at 6:30 PM for a cost of \$30. As usual, this includes instruction, supplies, and snacks. We hope you can join us to make your unique reusable bag!

Join us for family-friendly game night on Friday, February 21st from 6-8 PM! If you have a favorite game, bring it along with you or just show up for some fun!

On Saturday, March 21st, we'll be meeting at 2 PM at the Golf Dome in Tonawanda to play mini golf! The cost is \$5 per person at the door. All are welcome!

Looking Ahead

Sunday School will resume on January 5th. Our new Nursery attendant during the 10:30 service will be Danielle Duck. She is 21 years old, just graduated from NCCC with an associates and certificate in Early Childhood Education, and is currently attending Buffalo State for Combined Childhood Education. She has worked at St. Timothy's CCC for a year and a half and has been teaching baton at Step-In-Time Studio for five years. She's excited to start her journey here and looks forward to meeting everyone!

Our Congregational Meeting on January 26th will discuss the audit report, capital campaign, and our year in review. There will be only one service at 10:30 and lunch will be provided. Please sign up in the Narthex to bring a salad or dessert.



A New Year of Giving



Habitat for Humanity is looking to collaborate with us and will be giving us a presentation in February. We are also looking forward to collaborations with the Grand Island Neighbor's Foundation, the Community Missions of Niagara Falls, the Grand Island Kiwanis Club, Mats for Mission, and ELCA Good Gifts in 2020.

First Communion will take place on Maundy Thursday, April 9th, and we will be doing another youth skit for Lent and Holy Week!

Educational Gatherings

Divine Guidance for Healthy Relationships: Boundaries from a Biblical Perspective will meet on Sundays at 6:30 PM from February 9th to April 12th. Join us as we discuss how to “live your life more fully and display love and truth more freely.”



If you're not sure if you can set limits and still be a loving person, if you have trouble saying no and are often taken advantage of, or if you don't feel in control of your life, this is the series for you. Please sign up by January 26th. The cost will be \$20 for a book and workbook, and the office will order the materials.

The *Inspired* book study will continue to meet on the final Monday of each month at 6:30.

Support Groups

Steady Love will resume the second Tuesday of the month, January 14th, at 6:30 PM.



Love & Loss, our grief support group, will run from January 9th to the 30th on Thursdays at 7:00 PM, and will run again from March 5th to the 26th. If you are struggling with loss, please consider joining us to learn how to cope. Please also send friends and neighbors our way if you know someone that might benefit from attending. You can RSVP by contacting the church office or by calling or texting Pastor Kris at 715-965-5940.

Prayer Chain



Here at St. Timothy, we believe that prayer is powerful and can be incredibly helpful in our lives and in the lives of others. Our prayer chain allows you to ask others in our church community to pray for your friends and loved ones in their times of need.

If you would like to add someone to the prayer chain, you can email us at sttimothygrandisland@gmail.com, call us at 773-4400, or fill out the prayer chain request sheet in the Narthex at the table next to the Sanctuary entrance. Please also include an address where we can send cards to those in our prayers.

Here are the people in need of our prayers right now:

- Robin Aronica, Donna Ulliman, and Wanda Cutini with heart problems
- Cheryl Rosati who is in a coma from ketoacidosis and her kids
- Rosaria Phillippone who has an inoperable brain tumor and brain infection
- Makenzie Cardwell, a one-year-old who has RSV and pneumonia
- Jen Ming Luo, Ray Pilarski, Jean Anstett, Robin Bengaglio Richard, Sylvia and Joe Smith, Debra Saura, Cathy Niccola, Charlene Faleski, and the Marris Family.

Pastoral Care

Pastoral Care is an important resource available at St. Timothy's. Pastor Kris can be contacted at any time at 773-4400 or 715-965-5940. The following are some situations in which you should call:

- ◇ In the event of a hospitalization or placement in another health care facility. These institutions do not notify churches and pastors, so Pastor Kris will not know unless you call.
- ◇ In emergency situations of injury or illness, even if there is no hospital admission. People are often sent home under difficult circumstances.
- ◇ In times of personal crisis or struggle in which you may benefit from direct pastoral care.
- ◇ When in need of pastoral services such as baptisms, weddings, home communion, funeral, or memorial services.
- ◇ In any other circumstance where pastoral care may benefit you. When in doubt, call.





JANUARY 2020

Sun	Mon	Tue	Wed	Thu	Fri	Sat
 <p><i>Come, let us adore him!</i></p>			1 	2	3	4
5 <i>Worship, 8 & 10:30</i> <i>Epiphany</i>	6  <p>EPIPHANY</p>	7	8	9 <i>Love & Loss, 7 PM</i>	10	11
12 <i>Worship, 8 & 10:30</i>	13	14 <i>Steady Love, 6 PM</i>	15 <i>Finance Meeting, 6:30 PM</i>	16 <i>Love & Loss, 7 PM</i>	17 	
19 <i>Worship, 8 & 10:30</i>	20 	21	22 <i>Snowman Totes, 6:30 PM</i>	23 <i>Love & Loss, 7 PM</i>	24	25
26 <i>Worship, 10:30 only</i> <i>Congregational Meeting</i>	27 <i>Inspired book study, 6:30 PM</i>	28	29	30 <i>Love & Loss, 7 PM</i>	31 	

***Saint Timothy Evangelical Lutheran Church
of Grand Island (ELCA)***

1453 Staley Road

Grand Island, NY 14072-2114

**Non-Profit
Organization**

U.S. Postage Paid

Permit 14

Grand Island, New York

OR CURRENT RESIDENT



THE Calling of the First Disciples

Service chart for January, 2020

	5	12	19	26
Deacons: 8:00	P. Buchanan	B. Peete	P. Buchanan	—
10:30	T. Wiswall	S. Miller	D. Yaeger	T. Cutini
Acolytes: 10:30	B. Pagoada	D. Castiglia	L. Sweeney	H. Mesmer
Ushers: 8:00	M. Endres	C. Remmes	M. Endres	—
10:30	B. Kemp	P. Bassette	P. Glassman	G. Barker
	M. Wasson	J. Pagoada	E. Glassman	S. Webb
Counters:	T. Endres	P. Yaeger	D. Kaniecki	T. Endres
	D. Fabio	S. Webb	K. Rose	D. Fabio
Coordinator:	C. Wasson			
Altar Guild:	A. Neutz	L. Barker	K. Bates	T. Senn